





# sun spots

QUILT DESIGNED BY MAUREEN CRACKNELL

*Sun Kissed*

FABRICS DESIGNED BY MAUREEN CRACKNELL



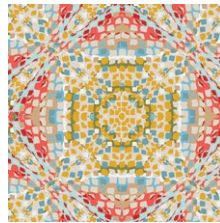
CLARY BREEZE



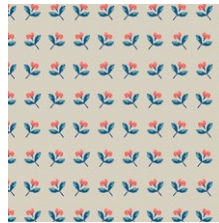
SKS-94300  
SUMMERDRESS DREAMS RAY



SKS-94301  
HAZY DAISIES SKY



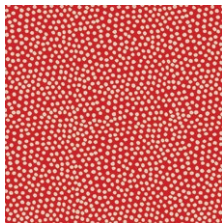
SKS-94302  
KALEIDOSCOPE BEACHSIDE



SKS-94303  
BASKING BUDS SAND



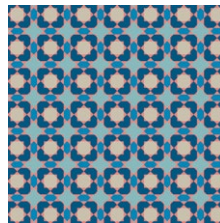
SKS-94304  
FLORAL POPS LEMONADE



SKS-94305  
SUNSPOTS STRAWBERRY



SKS-94307  
PALM ISLAND ESCAPE



SKS-94308  
POOL TILE BLUE



SKS-94309  
BANDANA GRAPEFRUIT



SKS-94310  
WOVEN TRAILS OCEAN

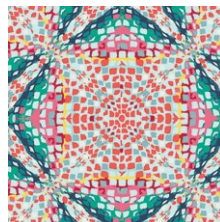
VIVID JOY



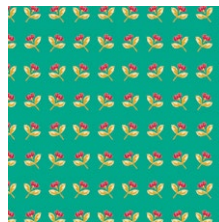
SKS-84300  
SUMMERDRESS DREAMS TIDE



SKS-84301  
HAZY DAISIES SCARLET



SKS-84302  
KALEIDOSCOPE POOLSIDE



SKS-84303  
BASKING BUDS JADE



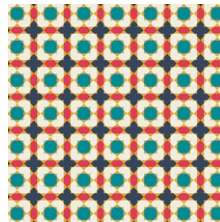
SKS-84304  
FLORAL POPS CHERRY



SKS-84305  
SUNSPOTS RASPBERRY



SKS-84306  
SUNNY SIDE UP



SKS-84308  
POOL TILE BURST



SKS-84309  
BANDANA BANANA



SKS-84310  
WOVEN TRAILS LAGOON



# sun spots

FINISHED SIZE | 72' x 72'

## FABRIC REQUIREMENTS

Fabric A	SKS-84300	½ yd.
Fabric B	SKS-94303	½ yd.
Fabric C	SKS-94302	½ yd.
Fabric D	SKS-94309	½ yd.
Fabric E	SKS-94308	½ yd.
Fabric F	SKS-94304	½ yd.
Fabric G	SKS-94300	½ yd.
Fabric H	SKS-94301	½ yd.
Fabric I	PE-408	2 ¼ yd.
<b>BACKING FABRIC</b>		
SKS-94308 4 ½ yds. <i>(suggested)</i>		
<b>BINDING FABRIC</b>		
Fabric J	SKS-94310	¾ yd.

## CUTTING DIRECTIONS

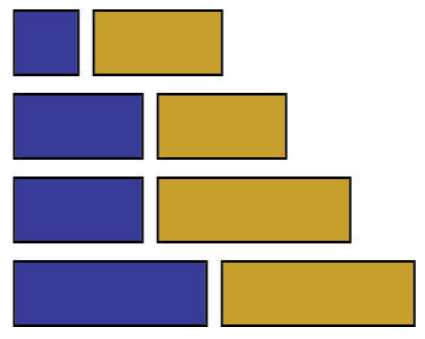
¼" seam allowances are included.  
WOF means width of fabric.

- Fabrics A, C, E, G:**  
 Nine (9) 2 ½" x 6 ½" rectangles  
 Twenty-four (24) 2 ½" x 4 ½" rectangles  
 Eighteen (18) 2 ½" squares
- Fabrics B, D, F, H:**  
 Eighteen (18) 2 ½" x 6 ½" rectangles  
 Eighteen (18) 2 ½" x 4 ½" rectangles
- Fabric I:**  
 Thirty-six (36) 2 ½" x 10 ½" rectangles  
 Thirty-six (36) 2 ½" x 8 ½" rectangles  
 Thirty-six (36) 2 ½" x 6 ½" rectangles  
 Thirty-six (36) 2 ½" x 4 ½" rectangles  
 Thirty-six (36) 2 ½" squares

## BLOCK CONSTRUCTION

Sew all rights sides together with ¼" seam allowance.

- The block used in this quilt is a variation of a Quarter Log Cabin Block. Several of the strips are pieced together prior to assembling the block then sewn in alternating bands of white and prints creating a dynamic corner emphasis when complete.
- You will use three fabrics for each block, the Corner Fabric, Edge Fabric, and the White Background Fabric.



- First, piece together the following strips:
  - 2 ½" square (corner fabric) > 4 ½" strip (edge fabric)
  - 4 ½" strip (corner fabric) > 4 ½" strip (edge fabric)
  - 4 ½" strip (corner fabric) > 6 ½" strip (edge fabric)
  - 6 ½" strip (corner fabric) > 6 ½" strip (edge fabric)
  - (see Diagram 1)*
- Next, start assembling your Quarter Log Cabin Block. Refer to Diagrams 2 and 3 for orientation of strips.
- Sew a 2 ½" square (white background fabric) > 2 ½" square (corner fabric).
- Sew block to a 4 ½" strip (corner fabric).
- Sew block to a 4 ½" strip (white fabric).
- Sew block to a 6 ½" strip (white fabric).
- Sew block to the pieced 6 ½" strip (make sure corner fabric is positioned like the diagram).
- Sew block to the pieced 8 ½" strip.
- Sew block to a 8 ½" strip (white fabric).
- Sew block to a 10 ½" strip (white fabric).
- Sew block to the pieced 10 ½" strip.
- Sew block to the pieced 12 ½" strip.









